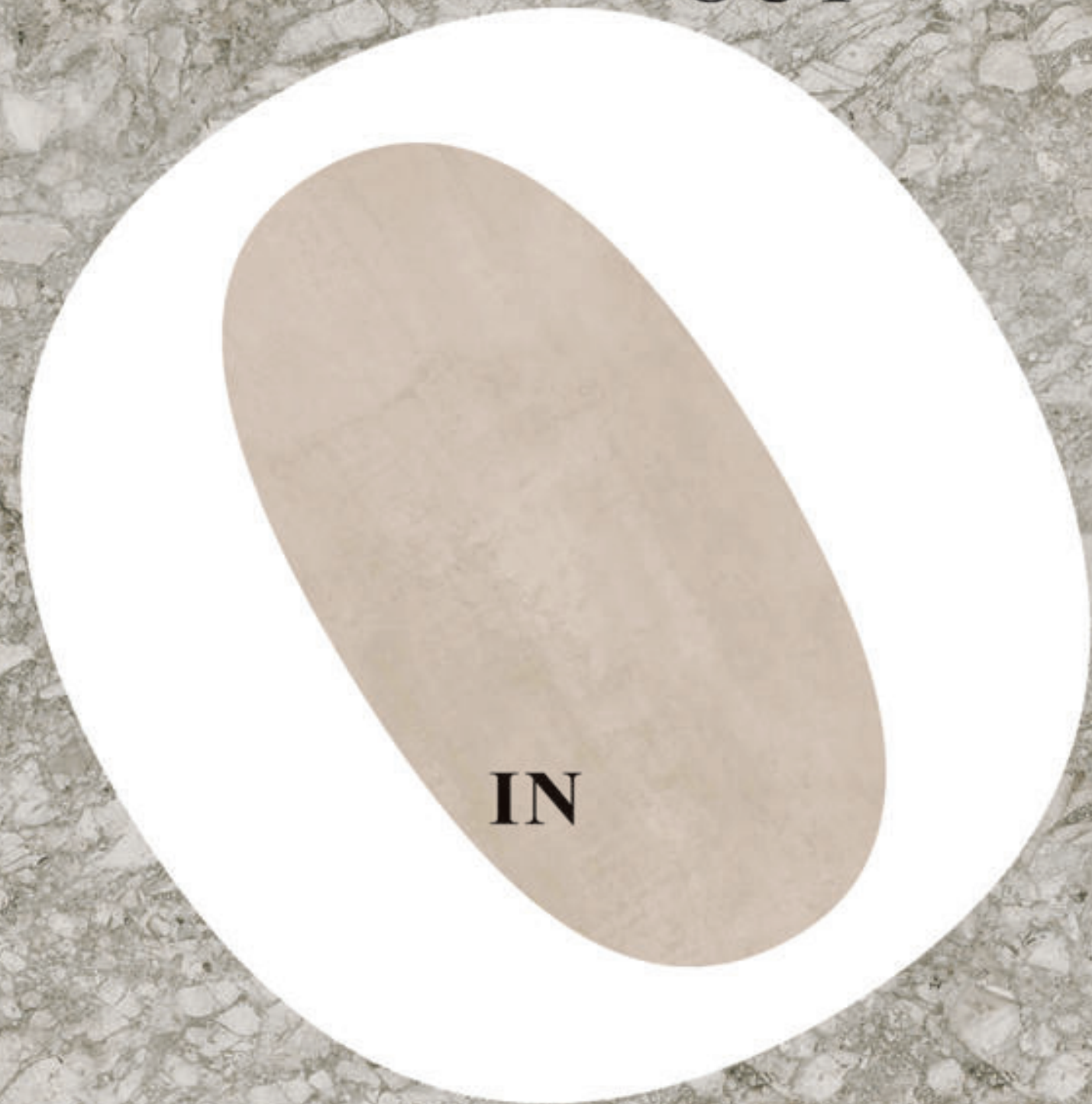


OUT

IN





شرکت کاشی مرجان با بیش از سی سال تجربه در صنعت تولید پوشش های سرامیکی توانسته است با بکارگیری پیشرفته ترین و مدرن ترین ماشین آلات صنعت کاشی و سرامیک ، نوآوری های جدیدی در این صنعت داشته باشد و در این راستا مفتخر به تولید :

- کاشی های پرسلان (بدنه سفید) به صورت مات ، پولیش و نیمه پولیش
- کاشی های دکوراتیو و لوکس
- کاشی های صنعتی از جمله ضد اسید صنعتی ، ضد قلیا صنعتی و ضد لغزندگی (Anti Slip)
- کاشی های با قابلیت عبور نور

با سایزهای متنوع و مطابق با استاندارد ISO 13006 می باشد. بر اساس استاندارد مذکور، محصولات این شرکت علاوه بر کاربری در فضاهای داخلی و خارجی ساختمان ها می تواند در فضاهای صنعتی و تجاری مانند کارخانه ها، بیمارستان ها، آزمایشگاه ها، محوطه های باز، کارگاه ها و مراکز اداری نیز مورد استفاده قرار گیرد. در حال حاضر تولیدات این شرکت به دلیل کیفیت بالا، به بسیاری از کشورهای اروپایی و آسیایی صادر می گردد.

Marjan Tile Co., with more than 30 years of experience in manufacturing ceramic coatings, using the most advanced and modern machineries in this field , has succeeded to be a very innovative company, and is proud to produce:

- Porcelain tiles in matt, polished and semi- polished finishes
- Luxury decorative tiles
- Industrial tiles including industrial Acid Resistant tiles , Alkali Resistant tiles and Anti Slip tiles
- Translucent tiles with light transmission property

These products are made in accordance with the International ISO 13006 standard in varying sizes. According to the a.m. standard, these products can be used indoor and outdoor , in all residential, commercial, and industrial applications, such as factories, hospitals, laboratories, workshops and offices. Thanks to the high quality of the products, they are already exported to many European and Asian countries.



ICON	شرح Description	کلاس سایش
	مقاومت به سایش کم جهت محیط هایی با ترافیک سبک Floorings subject to light traffic and laid in areas protected from abrasive and scratching agents such as sand, gravel, etc. In general, these tiles may be laid in bedrooms, bathrooms and private dwellings.	Class I (P.E.I I)
	مقاومت به سایش عادی جهت محیط هایی با ترافیک عادی Floorings exposed to medium-light traffic and laid in areas protected from abrasive and scratching agents, such as sand, gravel, etc. In general, these tiles may be laid anywhere in private dwellings, except kitchens.	Class II (P.E.I II)
	مقاومت به سایش بالا جهت محیط هایی با ترافیک نیمه سنگین Floorings exposed to medium traffic and laid in areas protected from abrasive and scratching agents, such as sand, gravel, etc. In general, these tiles may be laid anywhere in private dwellings and also in commercial type areas with light traffic.	Class III (P.E.I III)
	مقاومت به سایش بسیار بالا جهت محیط هایی با ترافیک سنگین Floorings exposed to medium-heavy traffic and laid in areas protected from abrasive and scratching agents, such as sand, gravel, etc. In general, these tiles may be laid in restaurants, hotels, shops, schools, offices, etc.	Class IV (P.E.I IV)

Icon	شرح آیکن	Description
	مقاوم در برابر یخ زدگی	Frost Resistant
	تک پخت	Single Fired
	مقاوم در برابر اسید	Acid Resistant
	سطح براق	Polished Tile
	سطح نیمه براق	Semi Polished Tile
	سطح مات	Matt Tile
	ضد لغزندگی	Anti Slip
	زمینه یکنواخت	Uniform Appearance
	زمینه با تنوع متوسط	Moderate Variation
	زمینه با تنوع زیاد	Substantial Variation

STONE					
NAME	PAGE	NAME	PAGE	NAME	PAGE
Emerald	8-11	Bergamo	44-45	Crystal	60-61
Strand	12-15	Moon Rock	46-49	Valena	62-63
Pietra	16-23	Forest	50-51	Crown	64-65
Alpine	24-31	Prada	52-53	Granada	66-67
Salino	32-35	Flavia	54-55	Kathmandu	68-71
Classic Marble	36-37	Vision	56-57	Basalt	72-73
Sahara	38-43	Pacific	58-59	Silva	74-75

WOOD			
NAME	PAGE	NAME	PAGE
Pastel Wood	78-81	Ayan	82-83

ABSTRACT					
NAME	PAGE	NAME	PAGE	NAME	PAGE
Rust	86-89	Incarlo Unique	90-91	Incarlo Royal	92-93
				Incarlo	94-97

CEMENT					
NAME	PAGE	NAME	PAGE	NAME	PAGE
Calma	100-101	Portland	104-105	Oxide	110-111
Nublado	102-103	Yard	106-109	Modena	112-113

MOSAIC			
NAME	PAGE	NAME	PAGE
Sport	116-117	Ocean	118-119

MONO COLOR	
NAME	PAGE
Rainbow	122-131

HEAVY DUTY					
NAME	PAGE	NAME	PAGE	NAME	PAGE
Vitrado	134-135	Flint	136-139	Hard Stone	140-141

INDUSTRIAL TILE					
NAME	PAGE	NAME	PAGE	NAME	PAGE
Acid Resistant	144-151	Alkali Resistant	152-153	Anti Slip	154-155
				Inner Quadrant / Outer Quadrant	156-157

NAME	PAGE	NAME	PAGE
Technical Specifications	160-162	Packing Specifications	163



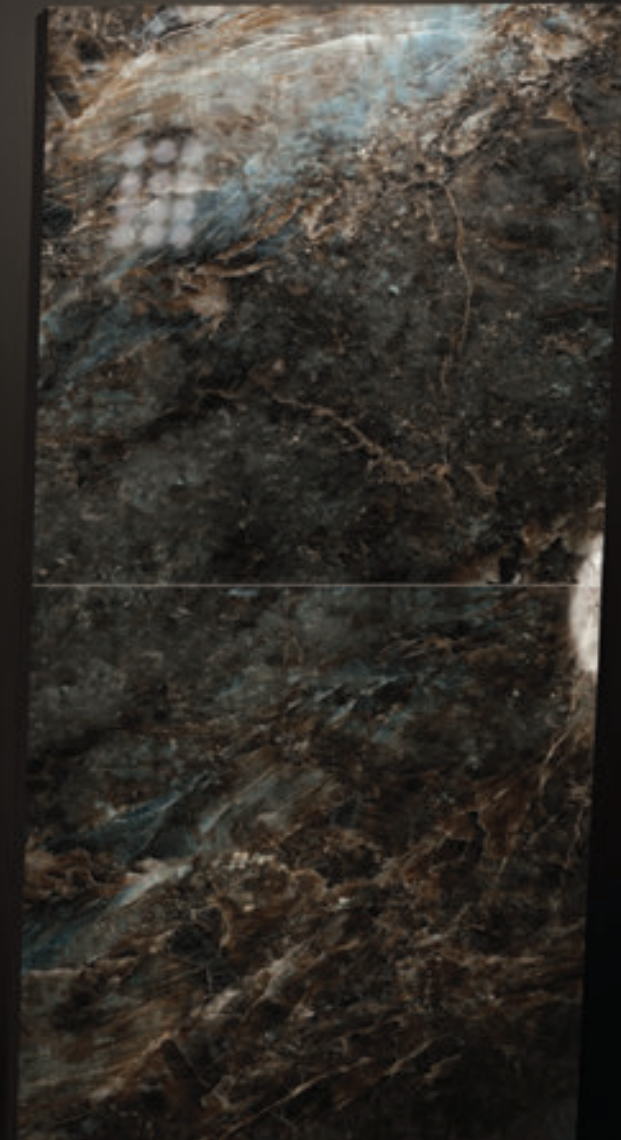
Stone
Collection 2022

- EMERALD
- STRAND
- PIETRA
- ALPINE
- SALINO
- CLASSIC MARBLE
- SAHARA
- BERGAMO
- MOON ROCK
- FOREST
- PRADA
- FLAVIA
- VISION
- PACIFIC
- CRYSTAL
- VALERIA
- CROWN
- GRANADA
- KATHMANDU
- BASALT
- SILVA

EMERALD

STONE COLLECTION

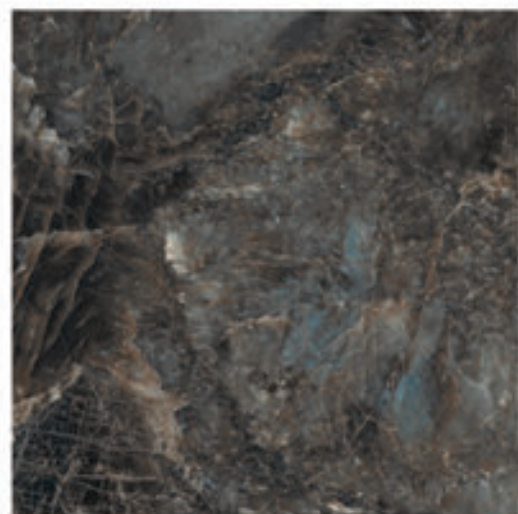
100x100



EMERALD 

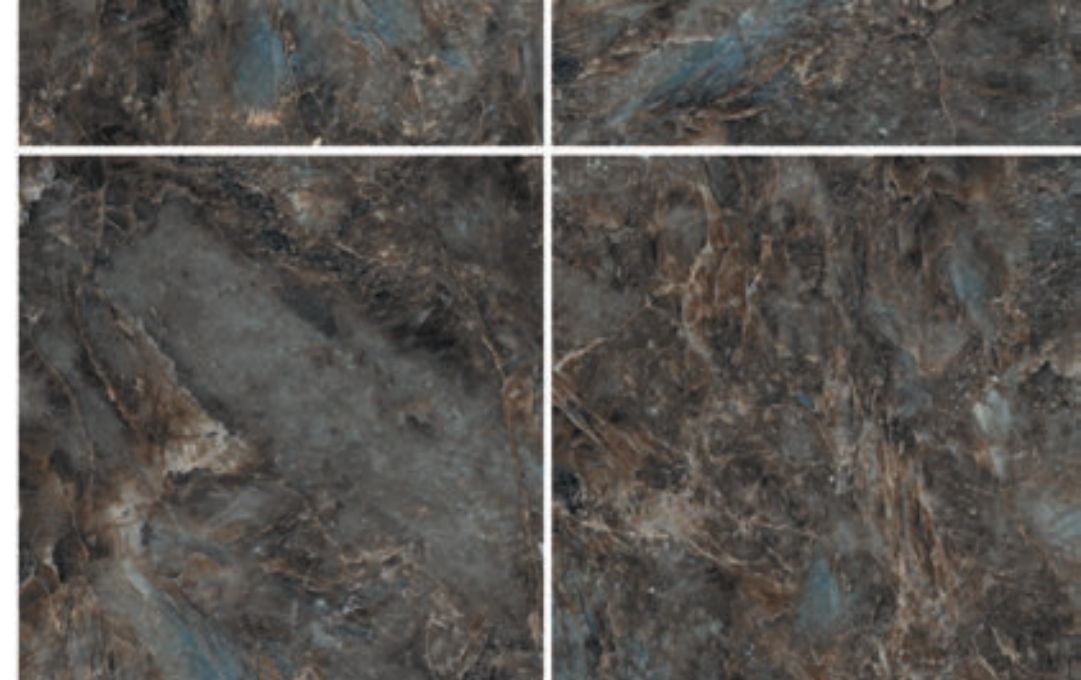
STONE COLLECTION

100x100



V
2
Face
6


8350 Emerald Galaxy & Blue



STRAND (POLISHED)



STONE COLLECTION

100X100



V
1
Face
4

8360 Strand Beige

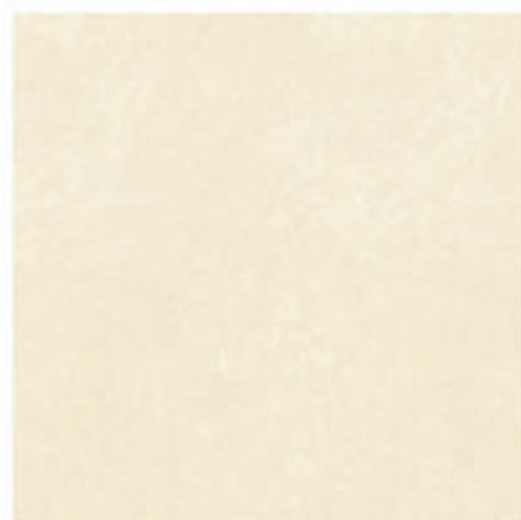


STRAND (MATT)



STONE COLLECTION

100X100



V
1
Face
4

8324 Strand Beige



PIETRA

STONE COLLECTION

60x120



PIETRA 
STONE COLLECTION
60x120 | 100x100



8100 Pietra Active Gray



8101 Pietra Dark Gray



8102 Pietra Black



PIETRA

STONE COLLECTION

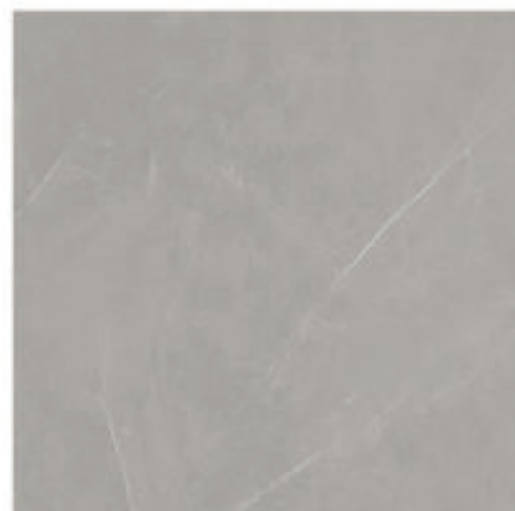
100x100



PIETRA 
STONE COLLECTION
100x100 | 60x120



8100 Pietra Active Gray



8101 Pietra Dark Gray



8102 Pietra Black



ALPINE MARAL TOWER
STONE COLLECTION
60x120

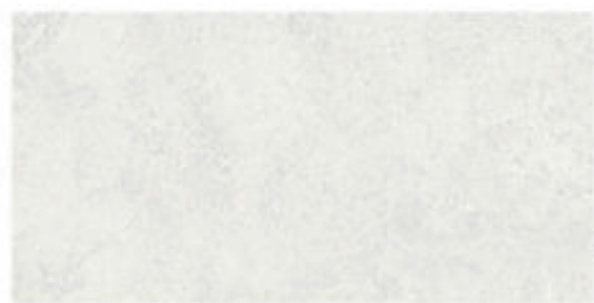
36-40

ALPINE



STONE COLLECTION

60x120 | 100x100



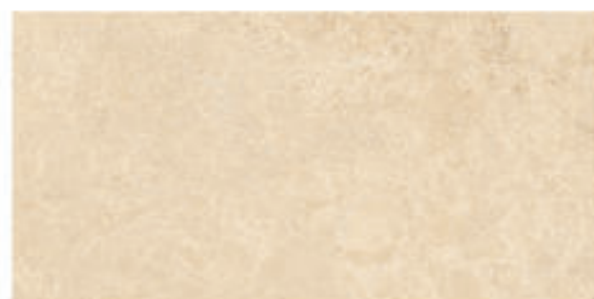
V
1
Face
4

8105 Alpine Light Gray



V
1
Face
4

8106 Alpine Dark Gray



V
1
Face
4

8107 Alpine Beige



ALPINE

STONE COLLECTION

100x100

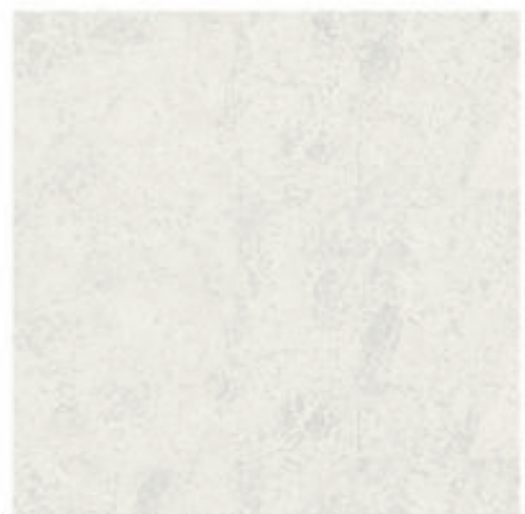


ALPINE



STONE COLLECTION

100x100 | 60x120



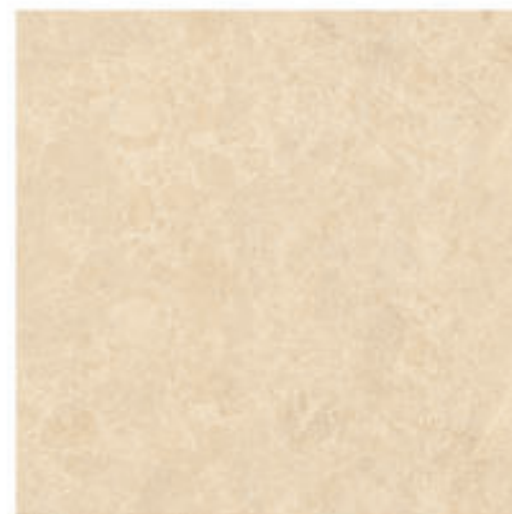
V
1
Face
4

8105 Alpine Light Gray



V
1
Face
4

8106 Alpine Dark Gray



V
1
Face
4

8107 Alpine Beige



SALINO 
STONE COLLECTION
100x100



V
1
Face
5


8342 Salino Moon Light



SALINO

STONE COLLECTION

100x100

8342

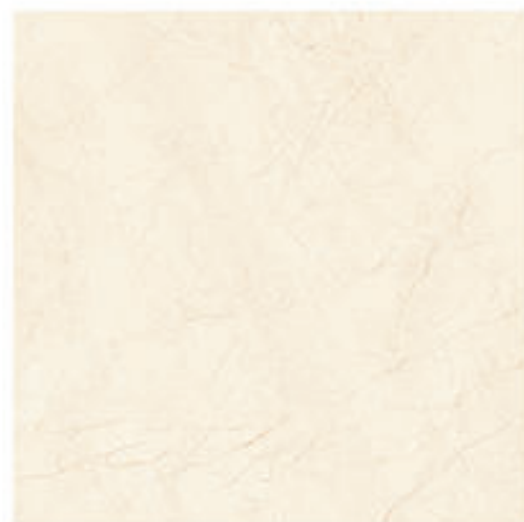
Specialized design
Intelligent product

CLASSIC MARBLE



STONE COLLECTION

100x100



V
1
Face
4

8346 Classic Marble Beige



SAHARA

STONE COLLECTION

100x100

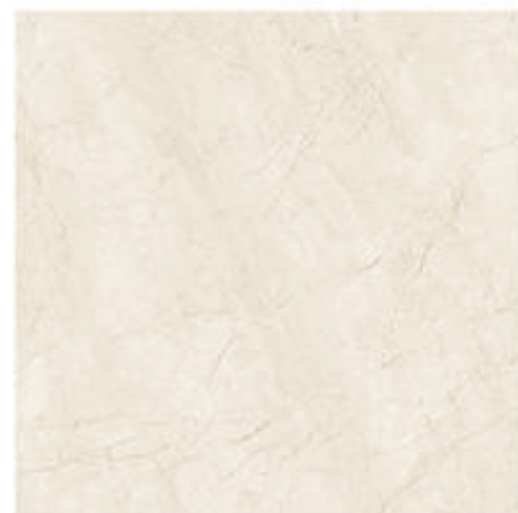


SAHARA



STONE COLLECTION

100x100 | 60x120



8337 Sahara Beige



8338 Sahara Light Gray



SAHARA



STONE COLLECTION

60x120 | 100x100



8138 Sahara Light Gray



8137 Sahara Beige

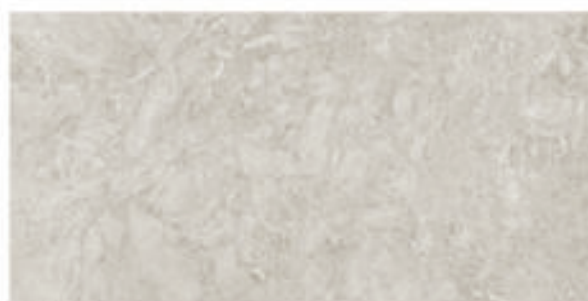


BERGAMO



STONE COLLECTION

60x120



V
1
Face
7

7752 Bergamo Light Gray



V
1
Face
7

7753 Bergamo Medium Gray



V
1
Face
7

7754 Bergamo Gray



MOON ROCK
STONE COLLECTION
60x120



MOON ROCK



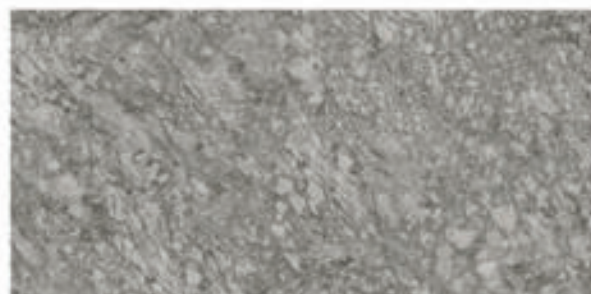
STONE COLLECTION

60x120



V
1
Face
4

8084 Moon Rock Light Gray



V
1
Face
4

8085 Moon Rock Dark Gray



FOREST



STONE COLLECTION

60x120



V
1
Face
5

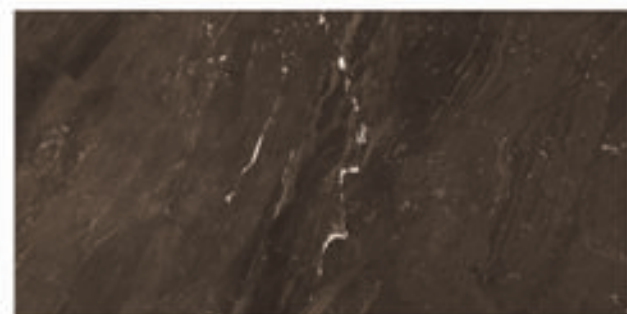
7738 Forest Green



PRADA 

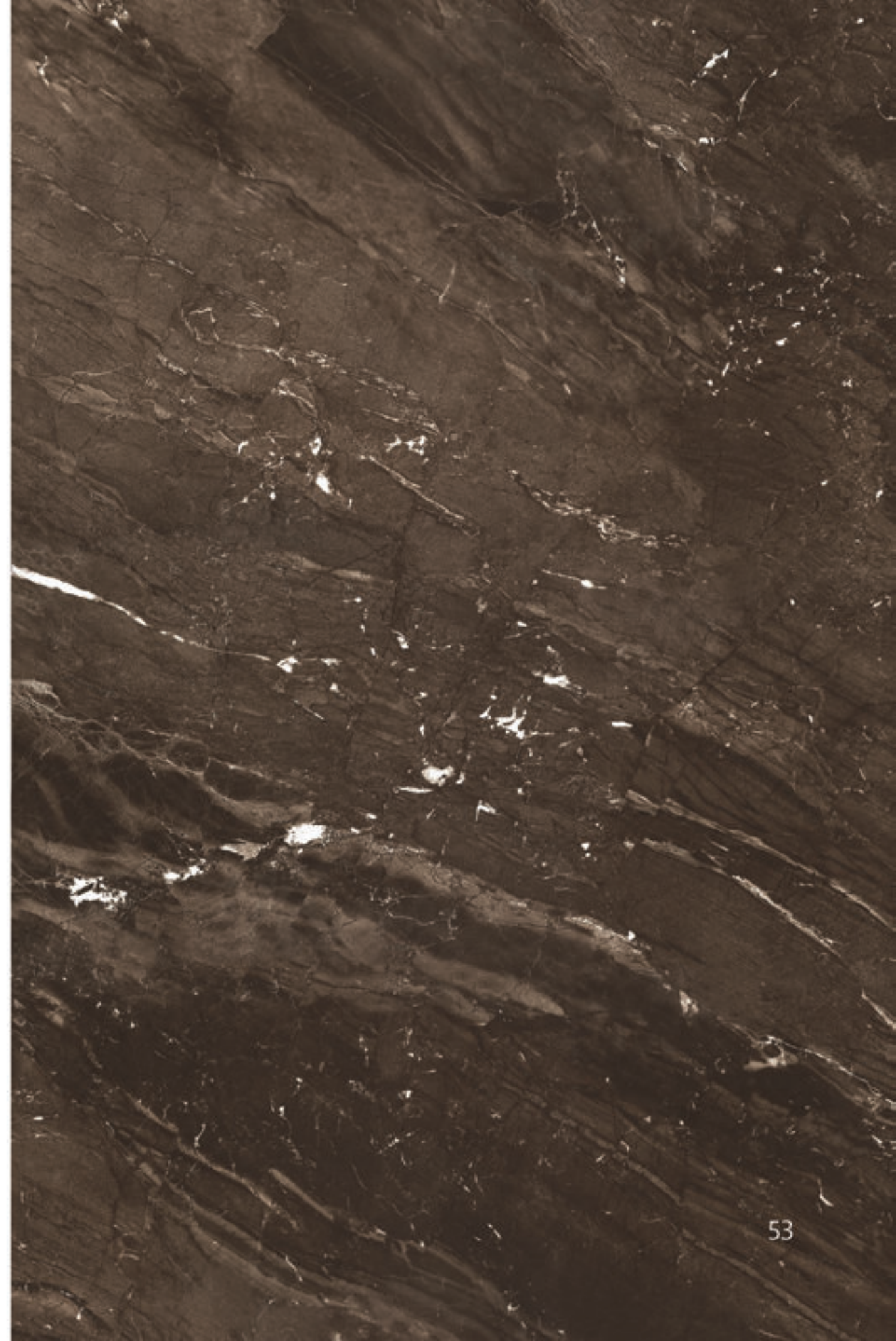
STONE COLLECTION

60x120



V
1
Face
6

8277 Prada Black



FLAVIA 

STONE COLLECTION

60x120



V
2
Face
12

8066 Flavia Beige



VISION 
STONE COLLECTION
60x120



V
1
Face
8



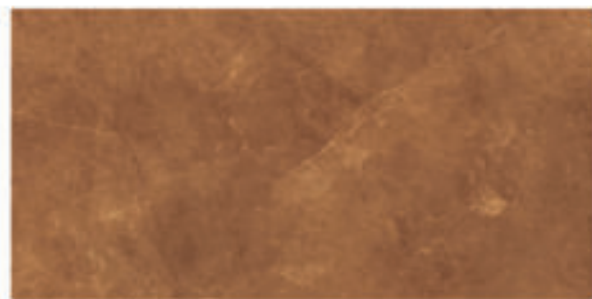
V
1
Face
8

8036 Vision Black

8035 Vision Light Beige



PACIFIC 
STONE COLLECTION
60x120



V
1
Face
4

7712 Pacific Brown



V
1
Face
4

7711 Pacific Bone



CRYSTAL



STONE COLLECTION

60x120



V
1
Face
9

7707 Crystal White



VALERIA



STONE COLLECTION

60x120



V
1
Face
7



V
1
Face
7

8077 Valeria Light Gray

8078 Valeria Gray



CROWN 

STONE COLLECTION

60x120



V
1
Face
6

7700 Crown White




GRANADA

STONE COLLECTION

60x120



V
1
Face
4


7141 Granada Light Beige



V
1
Face
4


7144 Granada Brown



V
1
Face
4


7142 Granada Beige

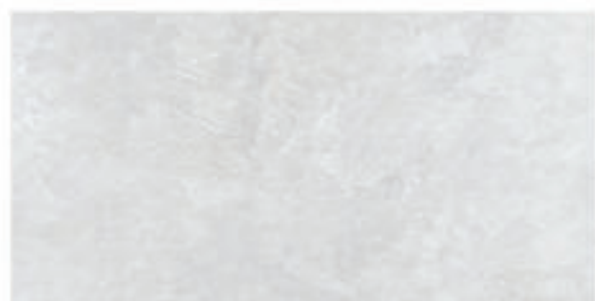


KATHMANDU



STONE COLLECTION

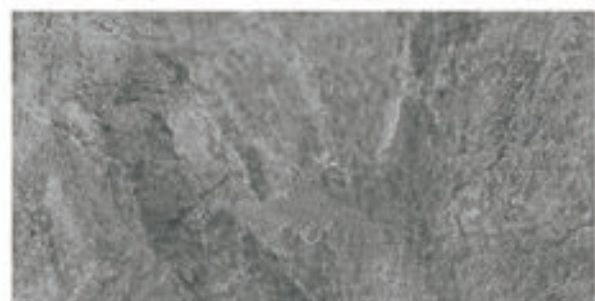
60x120



8263 Kathmandu Light Gray



8264 Kathmandu Medium Gray



8265 Kathmandu Gray

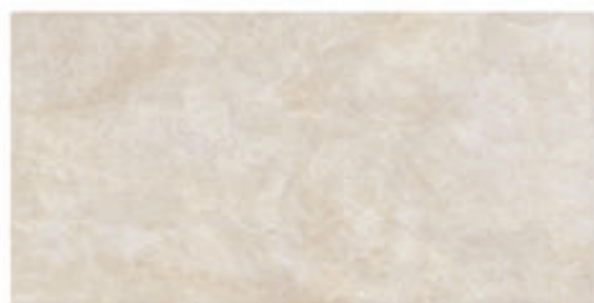


KATHMANDU



STONE COLLECTION

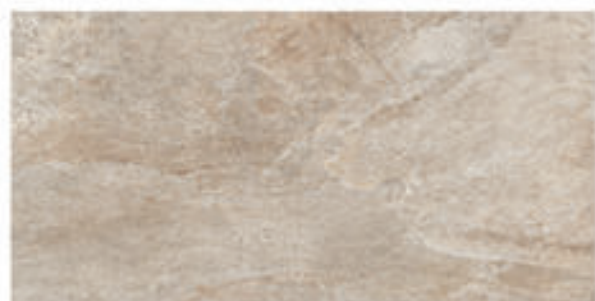
60x120



8266 Kathmandu Bone

V
1

Face
8



8269 Kathmandu Beige

V
1

Face
8



8268 Kathmandu Light Beige

V
1

Face
8

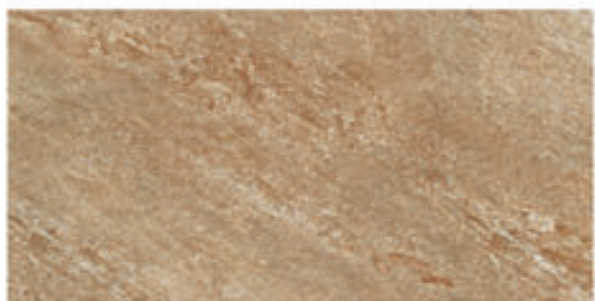


BASALT 
STONE COLLECTION
60x120



V
1
Face
10


7717 Basalt Light Beige



V
1
Face
10



7718 Basalt Beige



V
1
Face
10


7719 Basalt Light Gray



V
1
Face
10


7720 Basalt Gray



SILVA 
STONE COLLECTION
60x120



V
1
Face
5

8069 Silva White



V
1
Face
5

8068 Silva White





Wood
Collection 2022

PASTEL WOOD
AYAN

PASTEL WOOD



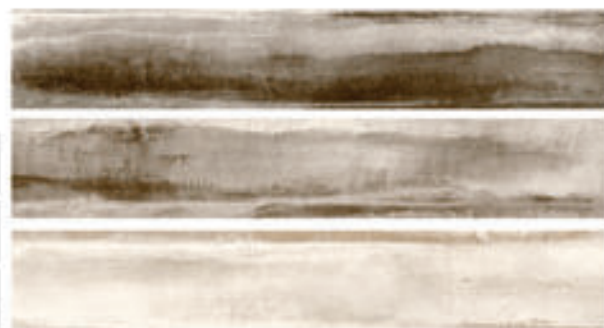
WOOD COLLECTION

20x120



V
3
Face
10

8234 Pastel Wood Blue



V
3
Face
10

8233 Pastel Wood Beige Gray



PASTEL WOOD

WOOD COLLECTION

20x120

8234

An order from
the heart of the nature

AYAN 

WOOD COLLECTION

20x120



8300 Ayan Silver



8303 Ayan Walnut



8301 Ayan Beige



8304 Ayan Brown



8302 Ayan Latte





Abstract

Collection 2022

RUST
INCANTO UNIQUE
INCANTO ROYAL
INCANTO

RUST 
ABSTRACT COLLECTION
100x100



V
1
Face
5

8327 Rust Cyan



RUST

ABSTRACT COLLECTION

100x100

8327

Engineer
your world

INCANTO UNIQUE



ABSTRACT COLLECTION

60x120



V
2
Face
5

8082 Incanto Unique Cola Brown

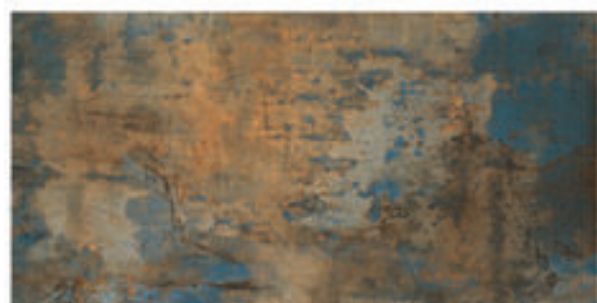


INCANTO ROYAL



ABSTRACT COLLECTION

60x120



V
2
Face
5

8083 Incanto Royal Blue



INCANTO (POLISHED)



ABSTRACT COLLECTION
60x120



V
2
Face
5

8071 Incanto Blue



V
2
Face
5

8070 Incanto Gray



INCANTO (MATT)



ABSTRACT COLLECTION
60x120



V
2
Face
5

8074 Incanto Blue



V
2
Face
5

8073 Incanto Gray





Cement

Collection 2022

CALMA

NUBLADO

PORTLAND

YARD

OXIDE

MODENA

CALMA



CEMENT COLLECTION

60x120



V
1
Face
5

8037 Calma Light Gray



V
1
Face
5

8038 Calma Gray



NUBLADO



CEMENT COLLECTION

100x100



V
1
Face
5

8325 Nublado Light Gray



V
1
Face
5

8326 Nublado Gray



PORTLAND 

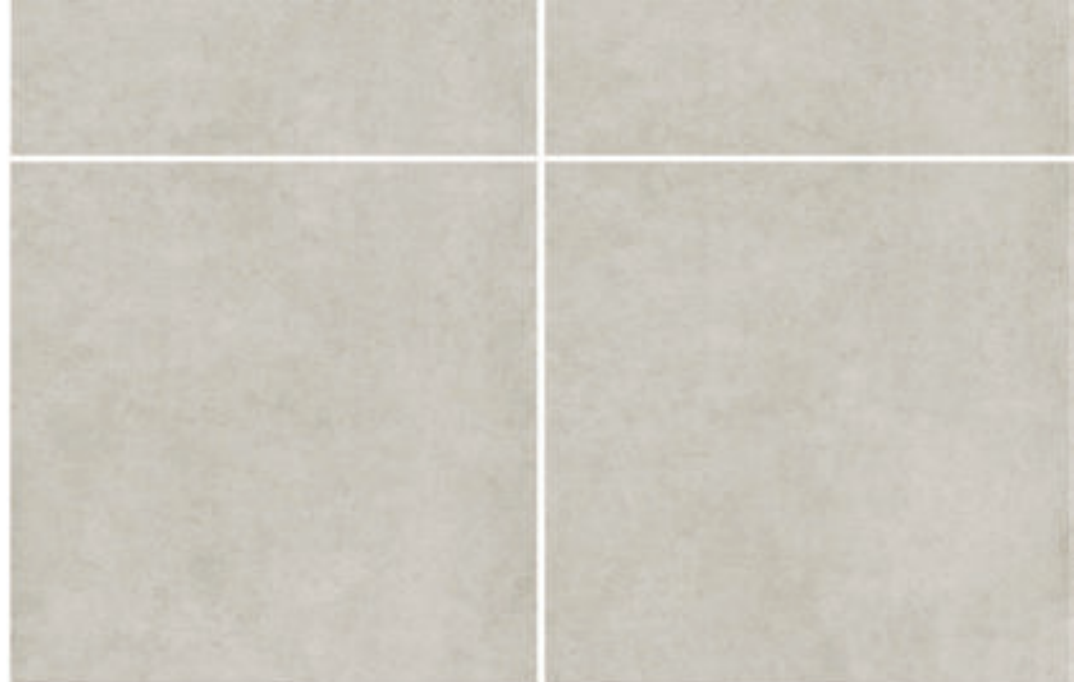
CEMENT COLLECTION

100x100



V
1
Face
3

8322 Portland Gray



YARD 
CEMENT COLLECTION
100x100



V
1
Face
4

8334 Yard Gray



YARD

CEMENT COLLECTION

100x100

8334

Aligned with
modern architecture

OXIDE 
CEMENT COLLECTION
100x100



V
1
Face
5

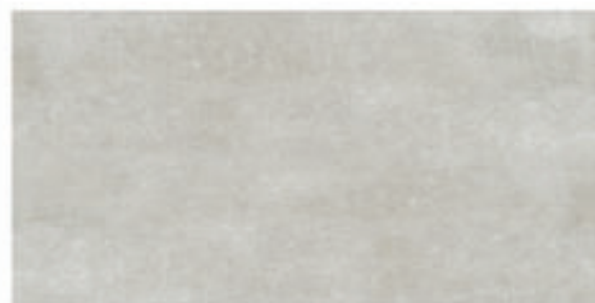
8328 Oxide Brown



MODENA

CEMENT COLLECTION

60x120



V
1
Face
6

7681 Modena Light Gray



V
1
Face
6

7680 Modena Gray





Mosaic
Collection 2022

SPORT
OCEAN

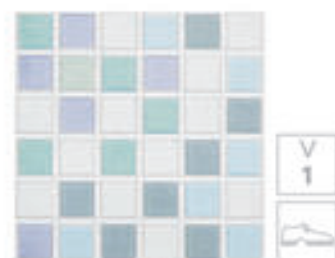
SPORT

MOSAIC COLLECTION

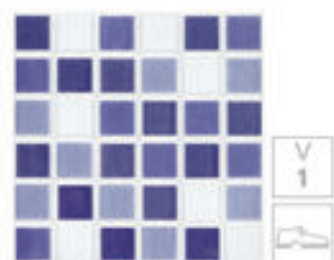
20x20



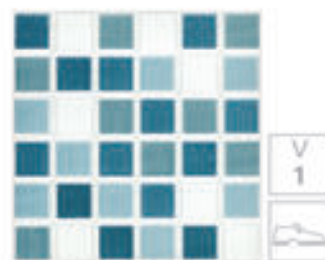
6340 Sport White



6347 Sport Sky



6330 Sport Royal



6331 Sport Turkish



6348 Sport Plum



OCEAN  
MOSAIC COLLECTION
20x20



1162 Ocean Sky



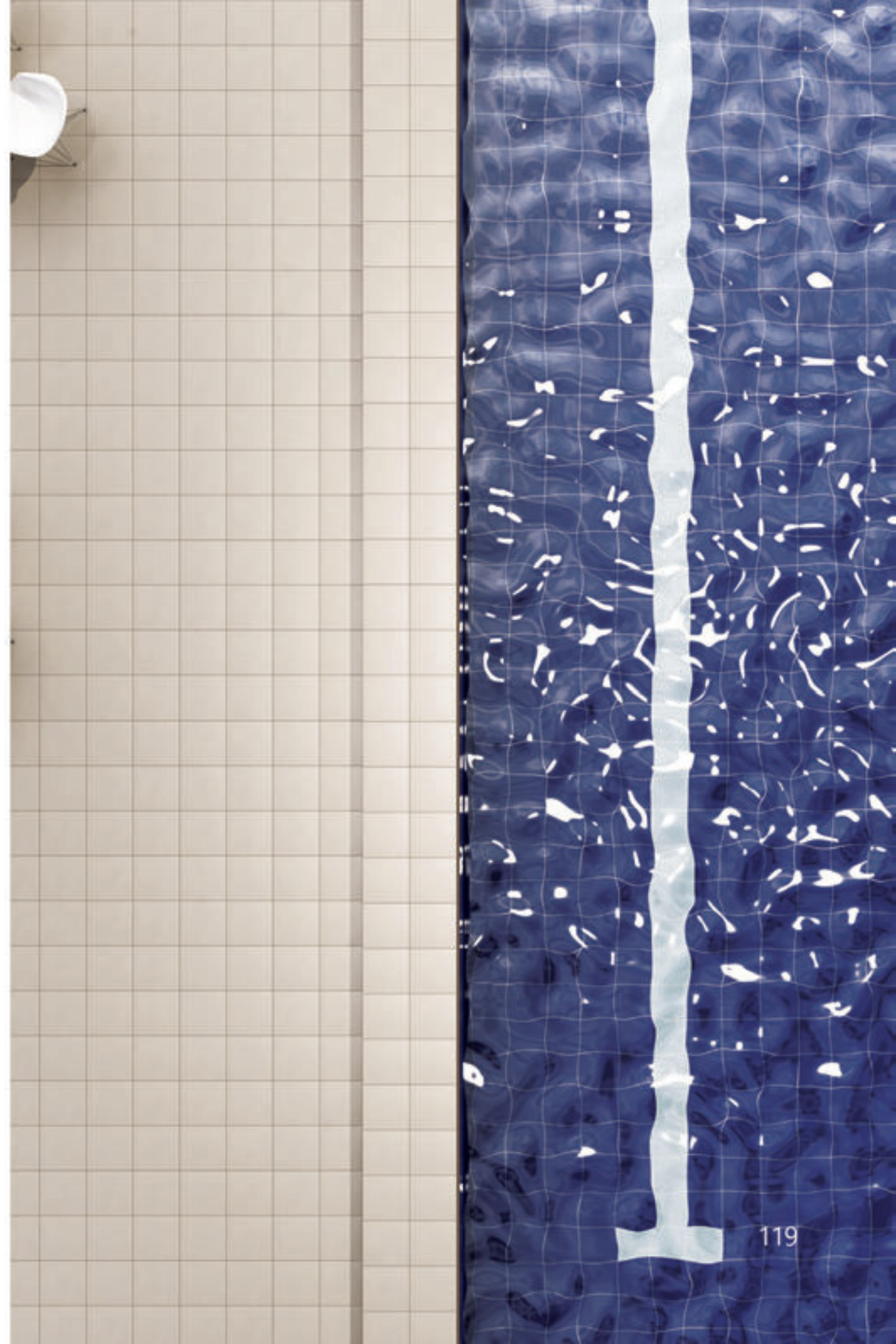
1163 Ocean Carolina



1164 Ocean Space



1161 Ocean White





Mono Color

Collection 2022

RAINBOW

RAINBOW

MONO COLOR COLLECTION

60x120



RAINBOW

MONO COLOR COLLECTION
60x120



8407 Gray



8410 Light Gray



8408 Dark Gray



8404 Pink



RAINBOW

MONO COLOR COLLECTION
60x120




8400 White



8402 Blue



RAINBOW 
MONO COLOR COLLECTION
60x120



8401 Green



8409 Orange



RAINBOW

MONO COLOR COLLECTION

60x120

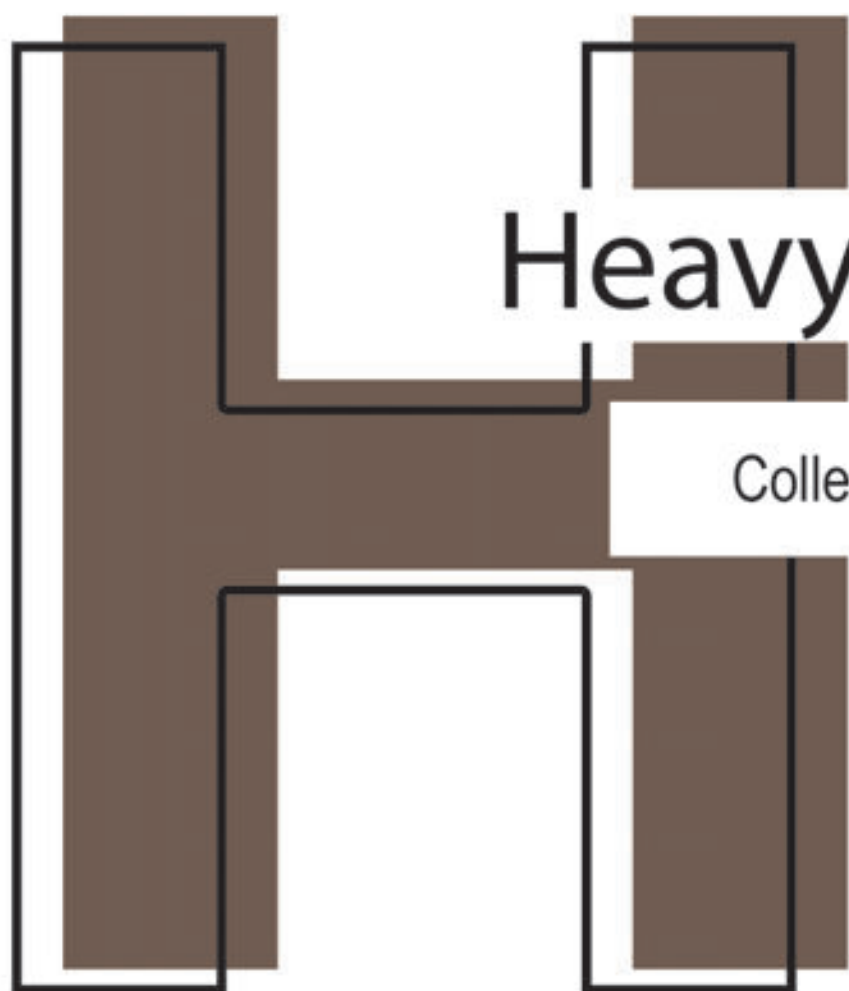


8405 Mustard



8403 Beige





Heavy Duty

Collection 2022

Heavy Duty

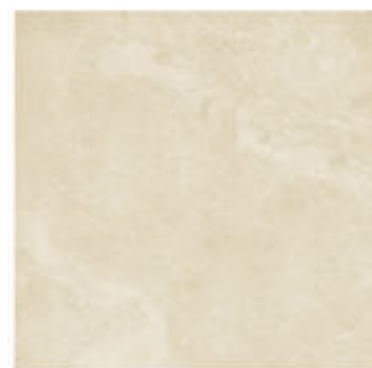
Collection 2022

VIDRADO

FLINT

HARD STONE

VIDRADO 
HEAVY DUTY COLLECTION
60x60



8431 Vidrado Beige



8432 Vidrado Silver



FLINT



HEAVY DUTY COLLECTION

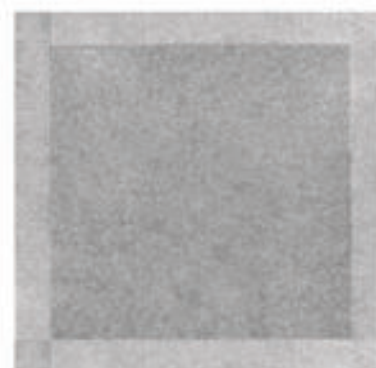
60x60



8426 Flint Beige



8428 Flint Gray



8429 Flint Dark Gray



FLINT

HEAVY DUTY COLLECTION

60x60

8429

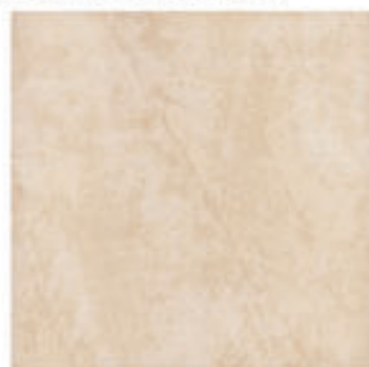
An intelligent solution
for your space

HARD STONE



HEAVY DUTY COLLECTION

39x39



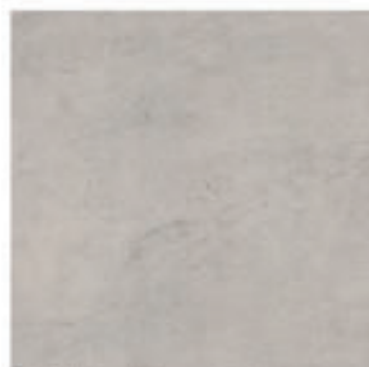
6173 Hard Stone Beige

V
1



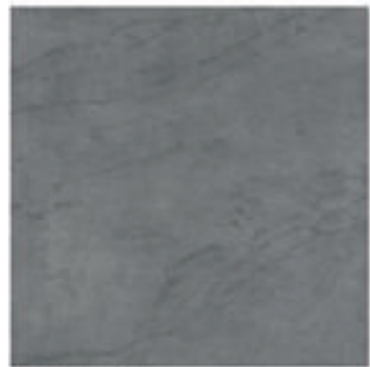
6136 Hard Stone White

V
1



6311 Hard Stone Light Gray

V
1



6312 Hard Stone Gray

V
1





Industrial Tile



Collection 2022

Industrial Tile

Collection 2022

ACID RESISTANT

ALKALI RESISTANT

ANTI SLIP

INNER QUADRANT/OUTER QUADRANT

COVE BASED SKIRTING*

ACID RESISTANT



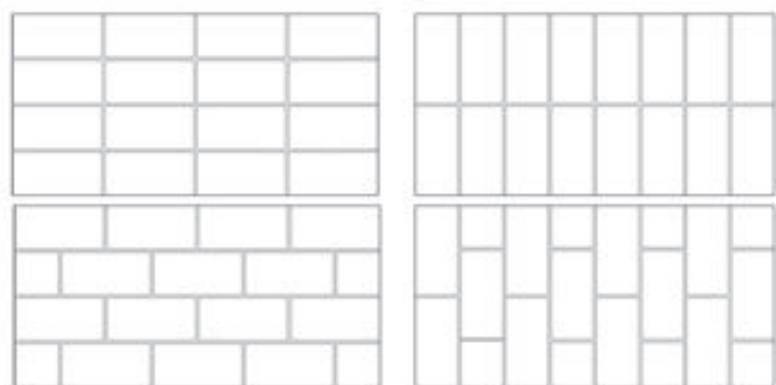
INDUSTRIAL TILE COLLECTION

11.5x24



V
1

1804 Acid Resistant



ACID RESISTANT

INDUSTRIAL TILE COLLECTION



V
1

1804 Acid Resistant
20x20
25x25
30x30
33x33



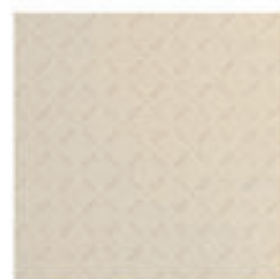
V
1

1806 Acid Resistant
20x20
25x25
33x33



ACID RESISTANT

INDUSTRIAL TILE COLLECTION



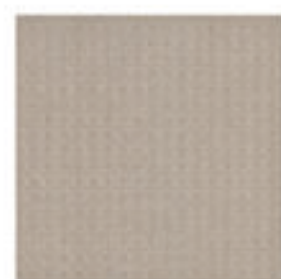
V
1

1821 Acid Resistant
25x25



V
1

1822 Acid Resistant
25x25



V
1

1824 Acid Resistant
33x33



V
1

1823 Acid Resistant
33x33



ACID RESISTANT

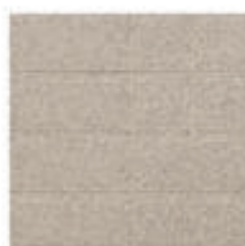


INDUSTRIAL TILE COLLECTION

20x20



1816 Acid Resistant



6701 Acid Resistant



ALKALI RESISTANT



INDUSTRIAL TILE COLLECTION

33x33



1993 Alkali Resistant

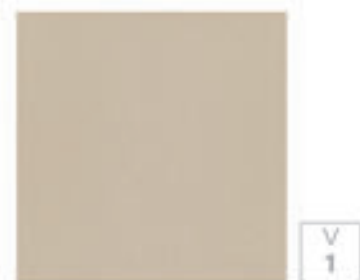


ANTI SLIP 

INDUSTRIAL TILE COLLECTION

33x33

30x30



1864 Anti Slip



INNER QUADRANT/OUTER QUADRANT COVE BASED SKIRTING



INDUSTRIAL TILE COLLECTION

3x20 / 11x40



Cove Based Skirting 0804
11x40



Outer Quadrant 0805
3x20



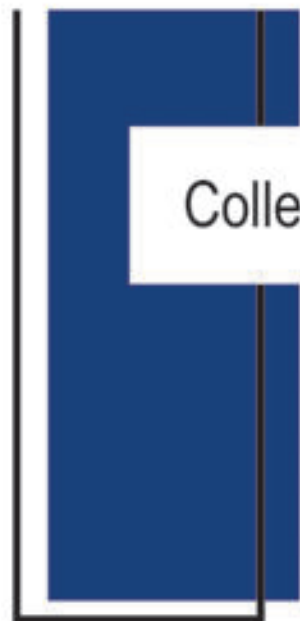
Inner Quadrant 0806
3x20



Technical Specifications
&
Packing Specifications



Technical & Packing Specifications



Collection 2022

TECHNICAL SPECIFICATIONS

WHITE BODY TILE SPECIFICATIONS (FIRST GRADE)		
	SIZE 60x60 (Rectified) 13mm	SIZE 100X100 (Rectified)
LENGTH & WIDTH	Max ±0.4 mm	Max ±0.5 mm
SURFACE FLATNESS	Max ±0.5 mm	Max ±0.5 mm
THICKNESS	±4% of Nominal thickness	±4% of Nominal thickness
RECTANGULARITY	Max 0.6 mm	Max 0.6 mm
STRAIGHTNESS OF SIDES	Max ±0.3 mm	Max ±0.3 mm
WATER ABSORPTION (Weight Percent)	Average ≤0.5%	Average ≤0.5%
MODULUS OF RUPTURE (N/mm ²) (BENDING STRENGTH)	Average ≥40 Min. 37	Average ≥40 Min. 37
BREAKING STRENGTH(N)	Min 4000	Min 1500
ABRASION RESISTANCE	II-IV According to ISO 10545-7	II-IV According to ISO 10545-7
THERMAL SHOCK RESISTANCE	In compliance with the requirements of ISO 10545-9	In compliance with the requirements of ISO 10545-9
THERMAL EXPANSION COEFFICIENT (0-100°C)	Max. 5×10 ⁻⁶ (1/K)	Max. 5×10 ⁻⁶ (1/K)
CRAZING RESISTANCE	In compliance with the requirements of ISO 10545-11	In compliance with the requirements of ISO 10545-11
FROST RESISTANCE	In compliance with the requirements of ISO 10545-12	In compliance with the requirements of ISO 10545-12
STAIN RESISTANCE	Class 5 According to ISO 10545-14	Class 5 According to ISO 10545-14
CHEMICAL RESISTANCE	Class GLA According to ISO 10545-13	Class GLA According to ISO 10545-13
FRICTION COEFFICIENT	Min II In compliance with the requirements of ISO 10545-17	Min II In compliance with the requirements of ISO 10545-17
IMPACT RESISTANCE	Min 0.8 In compliance with the requirements of ISO 10545-5	Min 0.8 In compliance with the requirements of ISO 10545-5

TECHNICAL SPECIFICATIONS

WHITE BODY TILE SPECIFICATIONS (FIRST GRADE)			
	SIZE 20X20 , 25X25 , 30X30 , 33X33 (Acid Resistant Non Rectified)		SIZE 33X33 (alkali Resistant Non Rectified)
LENGTH & WIDTH	20x20 , 25x25	33x33 , 30x30	Max ±0.9 mm
	Max ±1.2 mm	Max ±0.9 mm	
STRAIGHTNESS OF SIDES	Max ±0.4 mm	Max ±0.7 mm	Max ±0.7 mm
SURFACE FLATNESS	Max ±0.5 mm	Max ±0.7 mm	Max ±0.7 mm
THICKNESS	±4% of nominal thickness		±4% of nominal thickness
RECTANGULARITY	Max 1 mm		Max 1 mm
WATER ABSORPTION (Weight Percent)	Average ≤0.5%		Average ≤0.5%
MODULUS OF RUPTURE (N/mm ²) (BENDING STRENGTH)	Average ≥40 Min. 37		Average ≥40 Min. 37
BREAKING STRENGTH (N)	Min 1500		Min 1500
ABRASION RESISTANCE	II-IV According to ISO 10545-7		II-IV According to ISO 10545-7
THERMAL SHOCK RESISTANCE	In compliance with the requirements of ISO 10545-9		In compliance with the requirements of ISO 10545-9
THERMAL EXPANSION COEFFICIENT (0-100°C)	Max. 5×10 ⁻⁶ (1/K)		Max. 5×10 ⁻⁶ (1/K)
CRAZING RESISTANCE	In compliance with the requirements of ISO 10545-11		In compliance with the requirements of ISO 10545-11
FROST RESISTANCE	In compliance with the requirements of ISO 10545-12		In compliance with the requirements of ISO 10545-12
STAIN RESISTANCE	Class 5 According to ISO 10545-14		Class 5 According to ISO 10545-14
CHEMICAL RESISTANCE	Class GLA According to ISO 10545-13		Class GLA According to ISO 10545-13
FRICTION COEFFICIENT	Min II In compliance with the requirements of ISO 10545-17		Min II In compliance with the requirements of ISO 10545-17
IMPACT RESISTANCE	Min 0.8 In compliance with the requirements of ISO 10545-5		Min 0.8 In compliance with the requirements of ISO 10545-5
RESISTANCE TO CONCENTRATED ACID WEIGHT LOSS	≤1% According to ISIRI 3051		-

TECHNICAL SPECIFICATIONS

WHITE BODY TILE SPECIFICATIONS (FIRST GRADE) SIZE 60x60 , 20x120 , 60x120 (Rectified)		
LENGTH & WIDTH	60x60, 20x120	60x120
	Max ±0.4 mm	Max ±0.5 mm
SURFACE FLATNESS	Max ±0.5 mm	
THICKNESS	±4% of Nominal thickness	
RECTANGULARITY	Max 0.6 mm	
STRAIGHTNESS OF SIDES	Max ±0.3 mm	
WATER ABSORPTION (Weight Percent)	Average ≤0.5%	
MODULUS OF RUPTURE (N/mm ²) (BENDING STRENGTH)	Average ≥40 Min. 37	
BREAKING STRENGTH(N)	Min 1500	
ABRASION RESISTANCE	II-IV According to ISO 10545-7	
THERMAL SHOCK RESISTANCE	In compliance with the requirements of ISO 10545-9	
THERMAL EXPANSION COEFFICIENT (0-100°C)	Max. 5×10^{-6} (1/K)	
CRAZING RESISTANCE	In compliance with the requirements of ISO 10545-11	
FROST RESISTANCE	In compliance with the requirements of ISO 10545-12	
STAIN RESISTANCE	Class 5 According to ISO 10545-14	
CHEMICAL RESISTANCE	Class GLA According to ISO 10545-13	
FRICTION COEFFICIENT	Min II In compliance with the requirements of ISO 10545-17	
IMPACT RESISTANCE	Min 0.8 In compliance with the requirements of ISO 10545-5	

PACKING SPECIFICATIONS

Description	Acid Resistant Tile					
	20×20	25×25		33×33		30×30
	9 mm	10 mm	11 mm	11 mm	12 mm (Alkali Resistant)	12 mm
Thickness (mm)	9±4%	10.4±4%	11±4%	11±4%	12±4%	12±4%
Pieces/Carton	25	15	14	9	9	13
Quantity/Carton (m ²)	0.94	0.89	0.83	0.93	0.94	1.17
(Approx) Kg/Carton	18.9	20.5	19.4	22.6	25.1	30.6
Quantity/Pallet (m ²)	75.2	64.08	59.76	75.33	76.14	63.18
Carton/Pallet	80	72	72	81	81	54
(Approx) Kg/Pallet	1527	1491	1411	1845.6	2048.1	1667.4
Pallet Size (cm)	105×105	105×105	105×105	105×105	105×105	105×105

Description	Normal tile						
	39×39	60×60	60×60	20×120	60×120	60×120 (Polished)	100×100
Thickness (mm)	12±4%	10.7±4%	13±4%	11.4±4%	11.4±4%	11.4±4%	10±4%
Pieces/Carton	6	4	3	6	2	2	2
Quantity/Carton (m ²)	0.91	1.44	1.08	1.4	1.44	1.44	2
(Approx) Kg/Carton	23.7	34.5	32	33.7	36	36	46.3
Quantity/Pallet	58.24	51.84	38.88	50.4	46.08	46.08	64
Carton/Pallet	64	36	36	36	32	32	32
(Approx) Kg/Pallet	1531.8	1257	1167	1228.2	1167	1167	1496.6
Pallet Size (cm)	110×110	110×110	110×110	100×125	105×125	105×125	100×105

To see the last packing and technical specifications, please visit our website : www.marjantileco.ir



Innovation, Architecture, Beauty and Durability